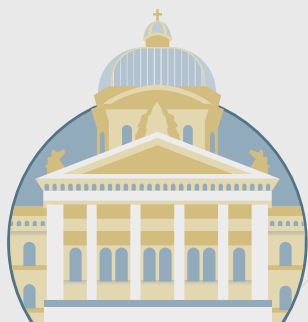


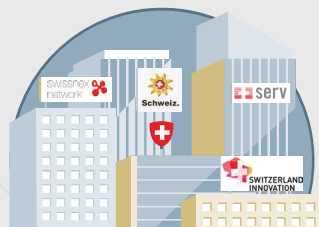
Switzerland Global Enterprise's Partner Network

Together with our partners, we support Swiss SMEs with their global business and help foreign companies with high value creation to establish themselves in Switzerland.



Principal

State Secretariat for Economic Affairs SECO, 26 cantons.



Federal- and cantonal-related organizations

SERV, Innosuisse, Presence Switzerland, Switzerland Tourism, Swissnex (SBFI), Areas (GZA, GGBA, BA-Swiss, SGBA), Switzerland Innovation.



Bilateral chambers of commerce

Globally networked, agreements with 21 bilateral chambers of commerce.

SWITZERLAND GLOBAL ENTERPRISE



Switzerland

Over 100 staff members at the Zurich, Renens and Lugano locations. Association with over 2,300 members. Mandated by the Swiss Confederation to promote exporting since 1927; mandated by SECO and all of the cantons to promote Switzerland as a business location since 2008.

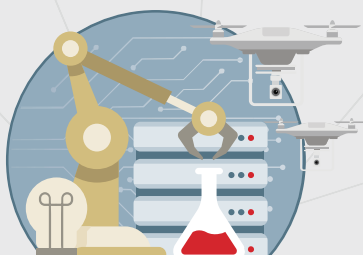
Global network

Around 100 staff members in branch offices, the Swiss Business Hubs (SBHs). S-GE operates the SBHs, while in organizational terms they are part of the Swiss Federal Department of Foreign Affairs (DFA) or the Swiss diplomatic representations in over 27 target countries.



Cantonal chambers of industry and commerce

Well-connected regionally in Switzerland thanks to a framework agreement with 18 chambers of commerce.



Associations and clusters

Industry and umbrella associations, funding organizations.



Experts and knowledge providers in Switzerland and abroad

Over 500 private experts, strategic partnerships.